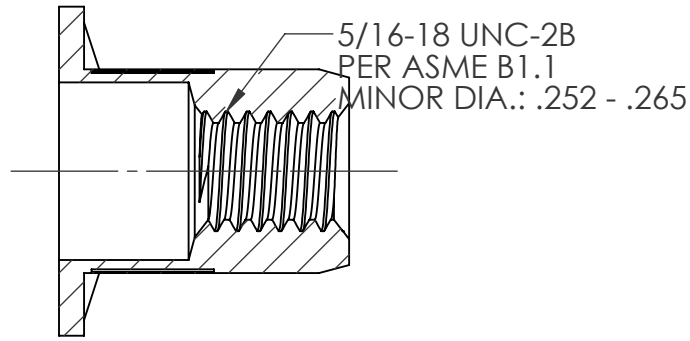
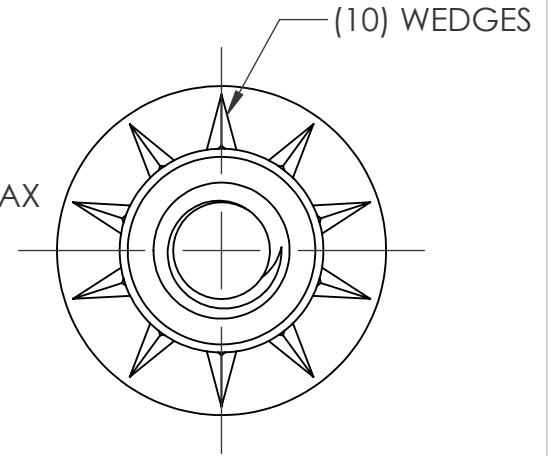
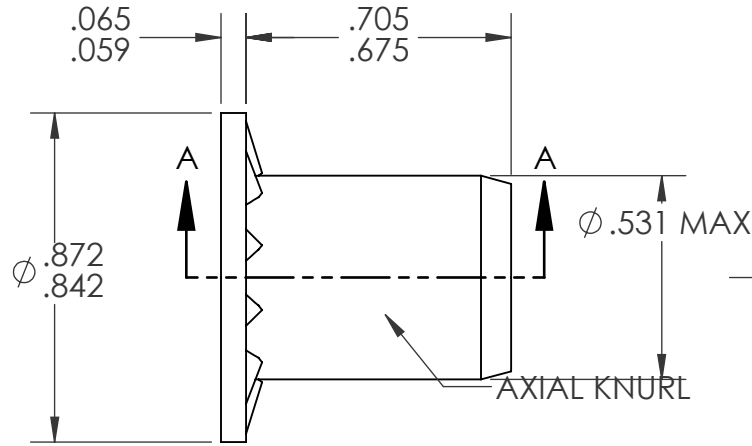
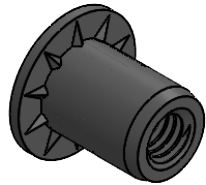
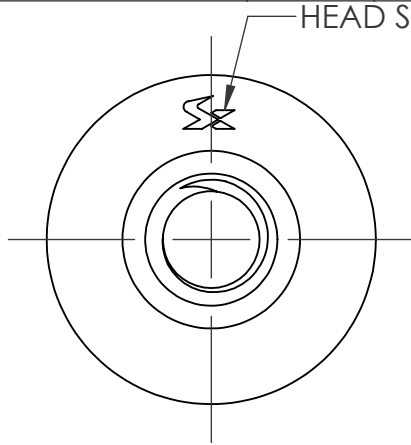


REVISIONS				
REV.	DESCRIPTION	DATE	ECN	INITIAL
A	INITIAL RELEASE	2/3/21	3698	MTB
B	UPDATE BODY DIAMETER	09/07/22	4105	MRA



SECTION A-A

NOTE:

- GRIP RANGE: 0.059 - 0.138
- HOLE SIZE: .532 +.006/-.000 AFTER ALL APPLIED FINISHES.
- INSTALLED LENGTH: .492 MAX.
- LUBRICATION: NONE
- INSTALLATION TOOL: SPIN-PULL
- THREADS MEET GRADE 5 PROOF LOAD: 6950lbf PER SAE J995

PROPRIETARY AND CONFIDENTIAL

THIS DRAWING, AND THE INFORMATION CONTAINED HEREIN, ARE THE PROPERTY OF SHEREX AND ARE NOT TO BE USED IN ANY MANNER DETRIMENTAL TO THE INTEREST OF THE COMPANY.
SHEREX SOLUTIONS RESERVES THE RIGHT TO REVISE PART/DRAWING WITHOUT NOTICE.
UNLESS OTHERWISE SPECIFIED, ALL SPECIFICATIONS REFERENCED ON THIS DRAWING WILL PERTAIN TO THE MOST RECENT AND ACTIVE REVISION.

		UNLESS OTHERWISE SPECIFIED:		NAME	DATE		
		DIMENSIONS ARE IN INCHES TOLERANCES: ANGULAR: MACH ±1 BEND ±1 TWO PLACE DECIMAL ±.01 THREE PLACE DECIMAL ±.005		DRAWN	MTB		2/3/21
		INTERPRET GEOMETRIC TOLERANCING PER: ASME Y14.5M-1994		CHECKED		TITLE: 5/16-18 OPEN END LARGE FLANGE OPTISERT	
		MATERIAL		ENG APPR.	CL		2/3/21
		C1008/C1010 STEEL		MFG APPR.			
		FINISH		Q.A.			
		ZINC PLATE CLEAR TRIVALENT CHROMATE PER SFS-01-001, SC1		COMMENTS:			
NEXT ASSY	USED ON			E-mail: info@sherex.com www.sherex.com Phone: 866-474-3739 Fax: 716-875-0358		SIZE DWG. NO. A OPT2-3118-138	
APPLICATION		DO NOT SCALE DRAWING				REV B	
				SCALE: 2:1 WEIGHT:		SHEET 1 OF 1	